



# Coffs Harbour Public School

Mrs Leonie Buehler — School Principal

7 Salamander Street  
Coffs Harbour NSW 2450

Phone: 6652 3355  
Fax: 6651 3991

Email: [coffsharb-p.school@det.nsw.edu.au](mailto:coffsharb-p.school@det.nsw.edu.au)

Web Address: [www.coffsharb-p.schools@nsw.edu.au](http://www.coffsharb-p.schools@nsw.edu.au)

**We acknowledge the traditional custodians of the land on which we live and work and we pay our respects to the Elders both past and present**

**1st June, 2016**

Dear Parents and Carers,

With the weather cooling down considerably many students have been reaching for their jumpers. School jumpers and jackets are available from the office for purchase. Remember to put your child's name on it and redo this after every few washes.

Teachers have been putting the finishing touches on student reports for this semester. They will be sent home on Monday 20 June 2016. Parent teacher interviews will be held the following week. We look forward to talking with parents about each child's achievements and future directions.

We have many events coming over the next few weeks. This term's Rewards Day is on Thursday 30 June. It will be an excursion with a cost associated. Please look for information and permission notes coming home shortly.

What a lovely initiative by Caitlin Mackie our Community Liaison Officer to offer walking excursions for our parents. Please feel free to join Caitlin's group next time. I've heard it's a lovely way to spend the morning getting to know new parents and carers in our school.

Our P&C have organised a night out at *Flip Out* for this Friday. I hope many of you will be able to bring your families along.

## **Parent & Visitor Behaviour on the School Site**

The vast majority of parents and visitors on our school site behave with respect towards staff and students and show the utmost support for our school. However, unfortunately there are times when inappropriate behaviour of a parent on the school site is considered unacceptable under policies of the NSW Department of Education (DoE). Therefore, it is timely to remind parents of expected behaviours on our school site. If a parent's presence on the school site is not in the best interests of the school staff or students, the principal is advised to restrict or prohibit the

access to the school of that parent. Entry onto any school site is a privilege not a right and the principal has the authority under the 'Inclosed Lands Protection Act 1901' to control access of any parent or visitor. This includes the capacity to impose conditions on or prohibit a person's entry to Coffs Harbour PS. Examples of inappropriate and unacceptable parent behaviour include angrily confronting a teacher, swearing at a teacher, interfering in an incident involving a student/s, directly questioning a student (who is someone else's child) about an incident, and defamatory comments about staff or students. **Parents who have a concern about their child or another student or a staff member need to make an appointment with the Principal or Assistant Principal to discuss the concern.** Staff and students on the school site are entitled to feel safe and free from intimidation. Teachers and the principal have a 'Duty of Care' for the students and must be able to investigate concerns, and follow up with appropriate consequences according to DoE and school policies, without inappropriate interference from parents. Parents are invited to attend school assemblies or events, and to volunteer in various roles in the school. Parents should not be in the school grounds at other times, including break times without the permission of the principal and without signing in and out at the office.

If the behaviour of any parent or visitor is considered unacceptable and not in the best interests of students and staff, they will be notified in writing in line with DoE policy. Serious incidents or continued behaviours similar to those previously mentioned will result in conditions imposed on that parent's access to Coffs Harbour PS. In order to have a safe and harmonious school, it is necessary for all parents and visitors to follow protocols and policies, and to behave in a manner which the vast majority of our community sees as acceptable and in the best interests of our school.

Have a great week,  
Leonie

## **Parent Community Liaison News**

Hi Parents

Thanks to those who joined up with me on Friday for the Botanic Gardens walk. It was a beautiful stroll and gave us a chance to get to know each other a little better. There were 6 of us and we finished up with a coffee etc. at the Kiosk. We did spy the giant Amazonian Water Lily as well as Elephant Apples. It would be lovely to have other parents join us for our next walk when we can schedule one.

Any parents who want to see their child perform in the Eisteddfod but don't have transport to get there please see me at school or call the school on 66523355 and they can get the message to me. Alternatively my email is [Caitlin.mackie3@det.nsw.edu.au](mailto:Caitlin.mackie3@det.nsw.edu.au) and I would love to help out in any way I can.

The Flip Out Fundraiser is on this Friday night starting at 5.30 for 3 hours. Further details are in this newsletter. Parents get to attend to watch their children and I hope to have the opportunity to say hi to you and your children and to see lots of CHPS kids there enjoying themselves.

***'At the end of the day, the most overwhelming key to a child's success is the positive involvement of parents.'*** Jane D. Hull

Part of my job is to add positivity to the experiences that our parents have when they walk through our school gates, when they get a call from school or when we are asked to volunteer or share our skills. At CHPS we feel very fortunate to have a diverse range of students and parents who are all a part of our school community. The fundraising committee of the P&C at our school have some great plans for some family activities coming up if you have the chance to support them.

Four Stage 3 students have been putting together a page to help us get to know others and their stories. Humans of CHPS is based on some of the famous social media pages around and Melissa, Sarah, James and Sam have put together some interesting profiles of two of our staff members. If you 'like' our CHPS Facebook page you will see more stories arriving shortly online. They have done a great job and asked questions that really make people think. Well done!

Caitlin Mackie  
Parent Community Liaison Officer

## **Botanic Gardens Walk**



## **PATCH Program**

**Congratulations** to Jacqi Howe and Anna Mosquera on successfully completing their PATCH training. They attended professional learning sessions with the school's Instructional Leader and completed tasks for both literacy and numeracy in the classrooms, as a follow up. It was fantastic to see such commitment and enthusiasm from our parents. A lovely morning tea was provided by the grateful staff at Coffs Harbour Public School.





## **Humans of CHPS**

### **Miss Berry**

I grew up in England all my life. As an adult, I started as a teacher for primary school students, something almost all of my family did as well. Soon I moved to Australia, something quite hard for me as all of my family and friends still lived in England. I started work at Moonee Beach resort, a beautiful little holiday complex. The view from my office in Australia was very different compared to my views back in England! I worked at Moonee Beach Resort for about a year, but I started to miss teaching, so I decided to be one again! Although I'm a teacher, I actually also have a degree in physical geology and geography. I am now an Australian citizen. At the ceremony there were meat pies and lamingtons – Aussie classics! I love it when a child doesn't know the answer to a question or doesn't know how to do something at the start of a lesson, but does at the end. I love the fact that I played a part in that.

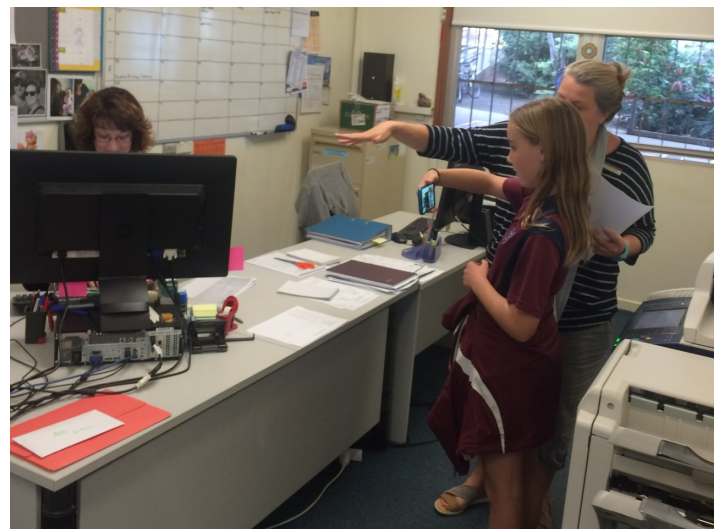
Written by Sarah, James, Melissa and Sam.



### **Ms Baker**

I started in a bank before moving to a finance company and then to the Department of Education in 1981. I've worked at CHPS for about twenty-two years. It's my favourite place to be. I've also made lots of lifelong friends – staff and students. It's very sad at the end of the year when the years six's leave for high school, as I've known them since kindergarten right through to year six. At CHPS, I've always worked as an administration Officer, where I'm the head of the office staff and also handle the finance side of the school. This is probably because I've worked a lot with money, as from my work at the bank. Not only that but I also love maths. I absolutely love ice-cream - But only good quality! I think that I have an ice-cream fetish! Whenever my grandchildren are due to come over I tell them that there'll be ice-cream, but when they get here, it's all gone!

Written by Melissa, James, Sam and Sarah.



## **Behind the Scenes of our Human of CHPS**

Mrs Mackie instructing Sarah on how to get the best shot.

Stay tuned for more **Human of CHPS** on our school Facebook page.

### Stage 3 & 3 AAA Excursion

AAA Rewards Day for Term 2 will be at 10 Pin Bowling-Club 300. Cost is \$10 per student. Students may dress in Mufti on the day and must wear socks and joggers for bowling. Permission notes to please be completed and returned with money by Monday 27 June, 2016. No late money or notes will be accepted.

### Yarrahappini Excursion Update

Outstanding balances need to be paid by Wednesday September 21, 2016. For those students who have not yet paid in full, the remaining amount is \$105.00. This amount can be paid in \$20 weekly instalments at the office until full payment is reached. The medical note also needs to be returned as soon as possible.

Thank you  
Mr Kenny

### Special Education Fundraiser

Our Special Education team are once again running their famous Timbertown Pie Drive. Order forms and money to be returned to Janelle Bullen or Kathy Turner by Friday 10, June.



### 2016 NSWPSA Basketball Championships

Last week Kimberly participated in the NSW PSSA Basketball Championships as part of the North Coast Team.

### Grip Leadership Day

On Monday our school leaders went to a conference and met up with other school leaders from many north coast schools. A great day of learning about what wearing a badge really means. Zeke said *"It was a really fun day. I learnt a lot about being a good leader and to help others out when needed."* Indi said *"The day was about going in to depth about how to be a good leader."*

### Library News

Book Club is due back Thursday 16th June. See Ms Leeson in library if you need a brochure.

### P&C News

Our Food Friday this week will be **Icy Poles** on June 3.

The last two Food Fridays will be:

June 10 - Hot Dogs

June 17 - Icy Poles

Tickets are still available for **this Friday's Flip Out Family Fun Night**. The whole family is invited to participate: big or little sisters and brothers are welcome to attend. The cost is \$15 per child for three hours of trampoline fun. Half of this money will come directly back to the school. Please note that supervision is not provided so parents will be responsible for the supervision of their children. The P&C will be running a Sausage Sizzle on the night with drinks also available. It should be a great night of fun and tickets are limited so get in quickly to avoid disappointment!

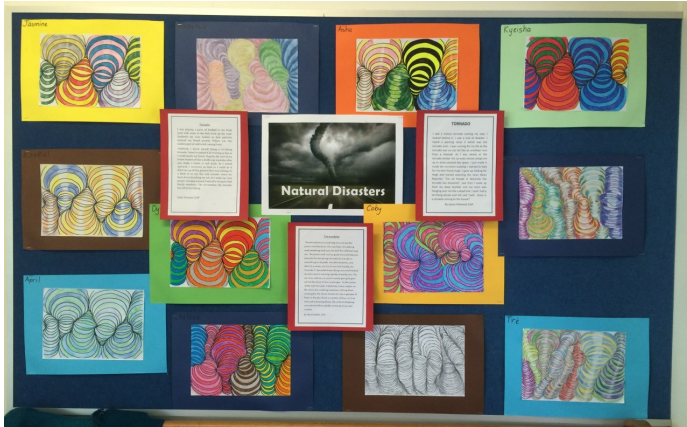
If you would like your voice to be heard within the P&C please come along to our AGM on June 8. New members are always welcome to come together and help make the school a better place for our children. The AGM will be followed by our regular monthly meeting so if you would like to get involved, please join us at 6:00pm in the staffroom.

If you would like any further information, please contact the P&C by email at [chpspandc@gmail.com](mailto:chpspandc@gmail.com) or contact Sam Bergen on 0421 374 911. You can also get regular updates on what's going on at our Facebook page: <https://www.facebook.com/chpspandc/>



### What's happening in 5/6F?

This term, 5/6F have started a unit on Natural Disasters. We have explored elements of optical art where we have drawn whirling tornadoes. We started the drawing with simple curved lines to eventually create a piece that resembles several tornadoes spiralling all at once. To accompany our art, we have done some descriptive writing depicting the wrath of the unforgiving natural disaster. Here are some drawings and snippets from our published work.



"I saw a vicious tornado coming my way. I looked behind it and I saw a trail of disaster. I heard a piercing noise which was the tornado siren. I was running for my life as the tornado was on my tail like an antelope runs from a cheetah. As I was nearly at the tornado shelter the tornado almost swept me up to what seemed like space. I just made it inside the mundane building." By James Filewood

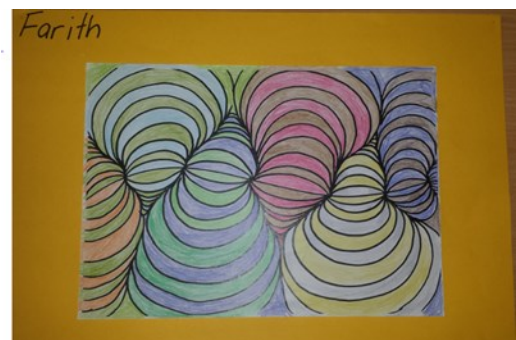
"I was playing a game of football in the front yard with some of the kids from up the road. Suddenly my nose tickled as dust particles entered my flared nostrils. Where was this sudden gust of wild wind coming from? Suddenly I found myself facing a terrifying tornado. I tried to outrun it by sprinting as fast as I could inside my house. Rapidly the roof of my house busted off like a bottle cap explodes after you shake a bottle of soft drink." By Coby Trotman



"One early morning I got up and went for a walk. As I was walking down to the duck pond the air was getting as cold as a freezer so I put on my violet jacket but it was still cold. I started to walk home. As I was walking home I could feel something wasn't right. Looking over my shoulder I could see whirling air which turned into a violent tornado. It was getting as big as a blue whale and whipping air was spiralling around the town." By Kyeisha Blair

As Lilly was calmly singing in the car, she said angrily "mum, why did the music stop?". Suddenly, some weird voice on the radio shouted quickly, "there is a tornado in town!". We felt a sudden rush of wind creeping up behind us. Dad slammed on the pedal as if a something was pushing down on his foot. By this time, we were moving as fast as a cheetah. I looked out the window and I saw a funnel shaped storm moving behind us. The tornado was as reckless as a black hole sucking in everything in its' path faster than a fired bullet. By Chelsea Dillon

I woke up to cool air brushing against my face. I realized that I was in a weird place. Everybody from my school was there. Miss Freeman softly told me I got hit in the head with a metal pole then I fell to the ground and Mr Murphy got the first aid kit so he could get a cold, wet face washer and put it on my hot head. I started to sit up and at exactly that moment I realized everyone is looking at me. I went to the teachers and asked "what is going on?" By Zoe Donaldson





# Coffs Harbour Public School

## 2016 Term 2 Calendar



Monday	Tuesday	Wednesday	Thursday	Friday
25/4 ANZAC Day	26/4 Staff Development Day	27/4 Students commence Term 2 School ANZAC Day Ceremony	28/4	29/4 P&C Icy Pole Fundraiser
2/5	3/5 Cross Country Carnival	4/5 P&C AGM 6pm Staffroom	5/5 P&C Mother's Day Stall Interschool Chess Competition	6/5 P&C Mother's Day Stall K-2 Assembly 11.30am (Performance by 3-6 Dance Group)  3-6 Assembly 12.15pm (Performance by 3-6 Dance Group)
9/5	10/5 NAPLAN	11/5 NAPLAN	12/5 NAPLAN	13/5 K-2 Responsible Pet Visit
16/5	17/5	18/5 Netball PSSA	19/5 Boccia Knockout	20/5 District Cross Country National Walk Safely to School Day Paul Kelly Cup K-2 Assembly 11.30am (Performance by KM) 3-6 Assembly 12.15pm (Performance by 3/6C & K/6B)
23/5	24/5 Brainstorm Performance	25/5	26/5	27/5
30/5 GRIP Leadership Conference	31/5	1/6	2/6	3/6 Flip Out K-2 Assembly 11.30am (Performance by KH) 3-6 Assembly 12.15pm (Performance by 5/6F)
6/6	7/6	8/6 P&C AGM and Monthly meeting—6pm staffroom	9/6	10/6 Eisteddfod (Dance)
13/6 Queen's Birthday Public Holiday	14/6	15/6 Yr 2-6 Athletics Carnival	16/6	17/6 K-6 Athletics Carnival
20/6 Semester 1 Reports sent home	21/6	22/6	23/6	24/6 LCOS Winter Sports Carnival
27/6 Parent/Teacher Interviews	28/6 Attendance Party	29/6 PB Assembly	30/6 Rewards Day	1/7 Last Day of Term2 K-2 Assembly 11.30am (Performance by 2L)  3-6 Assembly 12.15pm (Performance by 5/6L)